

VOL. 26 | FEBRUARY 2022

# OUR BACKYARD

An agricultural newsletter by Hardin County AgriLife Extension



## *From the Agent*

Howdy!

I am sure some of you are wondering where your January edition is, and I am so sorry that I did not get to wish everyone a Happy New Year! Unfortunately, I began the year under the weather and was away from the office for some time.

Never fear I am doing much better and have made sure this months edition is packed with all those helpful tips to get us ready for spring!

Katie A. Pace | Hardin County Extension Agent

### OVERVIEW:

- **From the Agent**
- **Horticulture Corner**
- **Garden Harvest Cooking**
- **Producers Coral**
- **Good Read**
  - Lawmakers Introduce Bill to Limit Foreign Ownership of U.S. Ag Land
- **Upcoming Programs**
  - Private Pesticide Applicator Training
- **Get Involved**



# HORTICULTURE *CORNER*

## **In the Garden**

Mid- to late February apply pre-emergent herbicide on to your lawns to control those spring weeds

Plant your seed potatoes by President's Day

Valentine's Day is the ideal time to prune rose bushes

Make sure to inspect shrubs and trees for scale or mealy bugs

## **Native Texans**



Since we are getting into the season for transplanting trees, I thought this would be perfect timing for one that can easily fit into any landscape. The Parsley Hawthorn tree best gets the name from the leaves being so similar to Parsley.

This small, deciduous tree tops out at about 25ft and as always loves our sandy loam soil. Beautiful white blossoms form in spring, giving way to bright red berries that mature through the summer. The berries are a favorite of many birds, while butterflies love the blossoms. Humans can also eat the berries, and they make great jellies/jams with them. Be sure to remove the seeds, because like apples they are not edible for us.

### **What should I plant this month?**

Early to Mid Month:

**Beets**

**Carrots**

**Onions**

**Radish**

**Greens**

**Lettuce**

**Spinach**

**Sugar Snap Peas**

**Turnips**

Transplant:

**Broccoli**

**Roses**

**Fruit Trees**

**Pecans**

**Grapes**

**Blueberries**

**Blackberries**

# GARDEN HARVEST

## Cooking

### *Creamy Spinach*

#### **Ingredients**

- 1/2 pound spinach leaves
- 2 tsp olive oil
- 1/2 tsp chopped garlic
- 1/4 Tbs butter
- 1/4 cup chopped onion
- 1/4 cup milk
- 1 oz cream cheese

#### **Instructions**

1. Saute spinach and garlic in olive oil until spinach is wilted. Move spinach to a separate bowl.
2. Add chopped onion to the heated pan with butter and cook until translucent.
3. Add to the pan with the onion milk, cream cheese, and salt and pepper to taste and cook for 2 minutes, or sauce thickens.
4. Once sauce thickens add the spinach back in and combine.
5. Serve hot and enjoy!



### *Bok Choy Salad*

#### **Ingredients**

- 4 cups chopped bok choy
- 1/2 cup chopped green onions
- 6 oz dry Chow Mein noodles
- 1/4 cup each olive oil, vinegar, sugar
- 2 Tbs soy sauce

#### **Instructions**

1. Wash and chop the bok choy and green onions then add them to a large mixing bowl.
2. Break up the Chow Mein noodles and add to the mixing bowl with the bok choy and green onions.
3. Add olive oil, vinegar, sugar, and soy sauce together in an airtight container and shake well to combine before drizzling over contents of the mixing bowl.



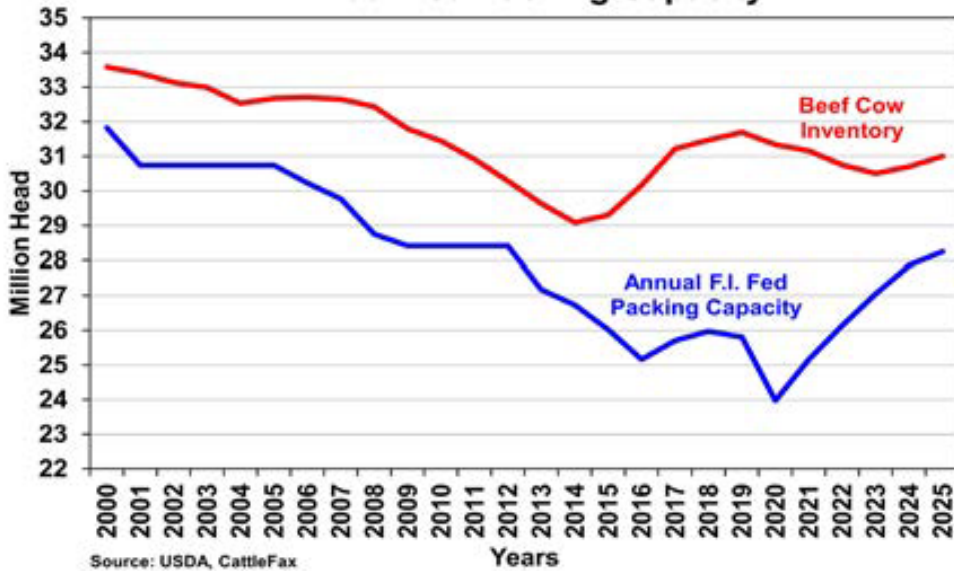
# PRODUCERS

## Coval

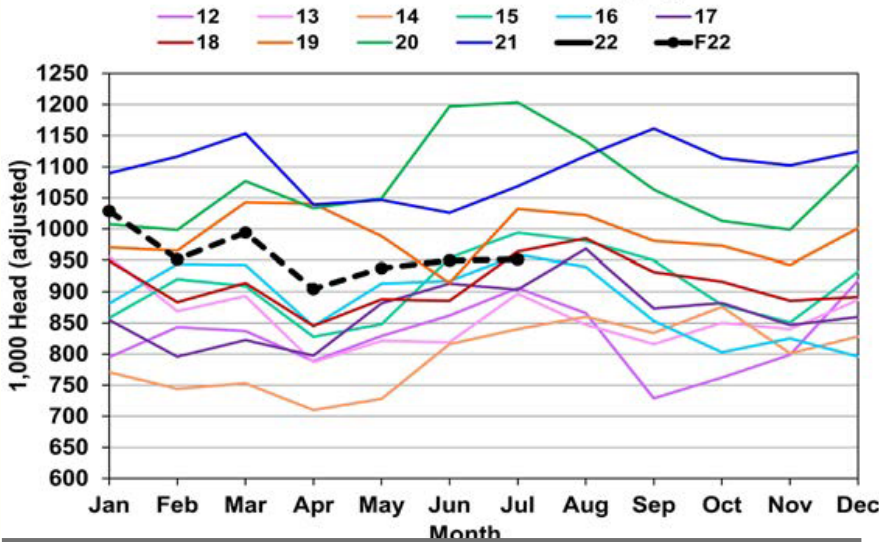


## Cattle Market

Beef Cow Inventory vs. Annual Fed Packing Capacity



Cattle as Fed Cattle Supply



**What to do with the herd this month?**

Don't forget lactating cows need high quality hay to keep their body condition scores up during the winter

Breed your replacement heifers a month before cows so you have plenty of time if they need help

Think about your pasture goals and if you should be looking to apply pre-emergent herbicide

### BQA Tip

Pay attention to foot angle. Cattle with weak pasterns have more angled hooves & shallow heels, leading to long toes that can break/crack which cause pain and reduced performance.

### When will she calve?

Feb 1-21 → Nov 10-30

Feb 22-28 → Dec 1-7



## ***Plan to Ease Port Congestion, Help Ship U.S. Ag Goods***

***By: Julie Tomascik***

The U.S. Department of Agriculture (USDA) announced February 1, 2022 it's plans to help ease port congestion and increase capacity at the Port of Oakland in Oakland, California. The agency will fund 60% of the start-up costs of adding a new 25-acre container yard. USDA also will help cover additional movement logistics at \$125 per container.

"This partnership with the Port of Oakland builds on our aggressive approach to addressing challenges within the supply chain and sends a strong signal that we are committed to working across the administration and with state, local and private partners to mitigate complex port capacity and congestion issues and to keep American agriculture on the move," U.S. Secretary of Agriculture Tom Vilsack said. Vilsack noted in a Monday event that the agency hopes to expand this opportunity to other ports along the coast.

"Supply chain issues are a big concern for farmers and ranchers, and we appreciate USDA's actions to ease congestion at several ports. {This} announcement about increasing capacity at the Port of Oakland, our third largest port for containerized waterborne agricultural products, is welcome news," American Farm Bureau Federation (AFBF) President Zippy Duvall said. "It's an important step to ensure America's farmers and ranchers have a reliable path for exporting the rice, beef, pork, fruits, vegetables, almonds, and many other agricultural goods grown in the United States."

Bottlenecks at some of the busiest U.S. ports have delayed agricultural commodity exports. The Ocean Shipping Reform Act of 2021, first introduced in August 2021, aims to update federal regulations for the global shipping industry and stop foreign ocean carriers from "unreasonably" declining to ship U.S. agricultural commodities from U.S. ports.

"Further steps must be taken to prevent carriers from sending empty containers out of U.S. ports, such as the passage and signing of the Ocean Shipping Reform Act," Duvall said. "Port congestion is one piece of a larger puzzle and AFBF will continue working with industry, federal agencies, and Congress to untangle the complicated web of supply chain issues facing farmers and ranchers."

# Upcoming Programs for *Hardin County*

TEXAS A&M  
**AGRI**LIFE  
EXTENSION

**FEBRUARY 11, 2022  
8:00 AM- 12:00 PM**

**1135 REDWOOD  
KOUNTZE, TX 77625**

# **PRIVATE PESTICIDE APPLICATOR TRAINING**

**TRAINING  
COST \$60**

The three and a half hour training will give participants the needed information to take the private applicator license test which is administered by the Texas Department of Agriculture.

Private Applicator License is for producers or land owners who wish to apply restricted use pesticides to their property.

**PLEASE RSVP BY FEBRUARY 9, 2022-  
HARDIN COUNTY EXTENSION OFFICE AT (409) 246-5128**

Texas A&M AgriLife Extension provides equal opportunities in its programs and employment to all persons, regardless of race, color, sex, religion, national origin, disability, age, genetic information, veteran status, sexual orientation, or gender identity. The Texas A&M University System, U.S. Department of Agriculture, and the County Commissioners Courts of Texas Cooperating. Persons with disabilities who plan to attend this meeting and who may need auxiliary aids or services are required to contact Texas A&M AgriLife Extension Service five working days prior to the meeting so appropriate arrangements can be made.



**Orange County Master Gardener Association's**

# **Annual Plant Sale**

**Saturday, March 12**

**8am to 1pm**

**CORMIER PARK**

**8235 FM 1442, ORANGEFIELD**

**Plants for Southeast Texas with many Texas Superstars**

**Numerous varieties of bedding and flowering plants, vegetables, shrubs and trees including citrus, berries, figs and avocado.**

**Visit <https://txmg.org/orange> - Plant Sale for more information**



The members of Texas A&M AgriLife will provide equal opportunities in programs and activities, education, and employment to all persons regardless of race, color, sex, religion, national origin, age, disability, genetic information, veteran status, sexual orientation, or gender identity and will strive to achieve full and equal employment opportunity throughout Texas A&M



# ROSE PRUNING DEMONSTRATION



**SATURDAY, FEBRUARY 19TH  
10:00 A.M. TO NOON**

**AT THE JEFFERSON COUNTY MASTER GARDENERS'  
TEST GARDEN – JEFFERSON COUNTY AIRPORT –  
4995 JERRY WARE DRIVE**

**FREE TO THE PUBLIC**

**LEARN DIFFERENT CLASSIFICATIONS OF ROSES &  
WHEN AND HOW TO PRUNE EACH  
(MADE SIMPLE)**

**PRESENTED BY JEFFERSON COUNTY MASTER GARDENERS**



*Beaumont Botanical Gardens*

KEEP BEAUMONT BEAUTIFUL

TREE

*Saturday, Feb. 26*  
*9 AM - Gone*

**GIVE-A-WAY**

6088 Babe Zaharias Dr  
Beaumont, Texas 77705

# *Get involved with Hardin County Extension*

Please consider joining the Hardin County Agriculture Committee to provide leadership and suggestions for upcoming programming. You don't have to make a large time commitment, with as few as four meetings per year, but we would love to hear your ideas and for you to share input on your county!

Please contact the office to update your email address, or if you know someone that would like to be added to this list, at (409) 246-5128, or by email [katie.pace@ag.tamu.edu](mailto:katie.pace@ag.tamu.edu). We also welcome suggestions for upcoming newsletters!

PO Box 610 | 1135 Redwood | Kountze, TX 77625

p: (409) 246-5128 | f: (409) 246-5201

<http://hardin.agrilife.org>

TEXAS A&M  
**AGRILIFE**  
**EXTENSION**